

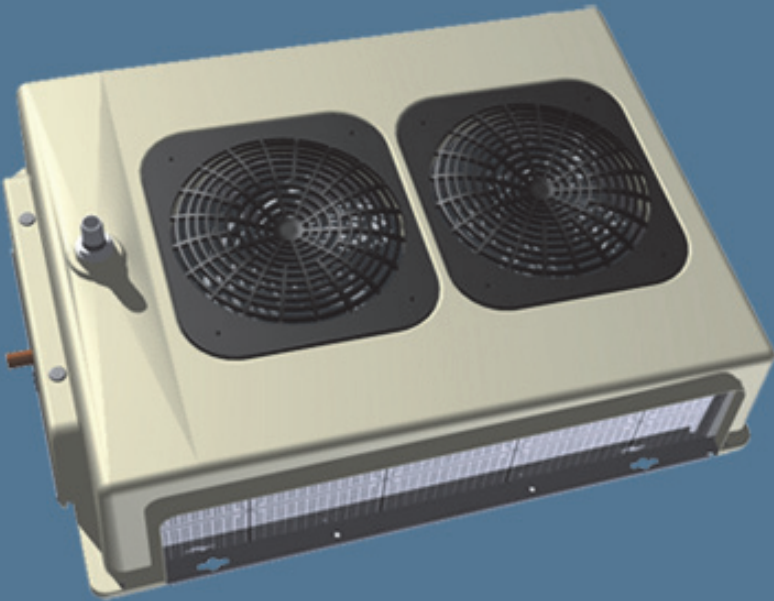


**ELVICON**  
AIR-COOLED HEAT EXCHANGERS

EXPERIENCE, QUALITY, KNOW-HOW  
EXPERIENCE, QUALITY, KNOW-HOW

# *DFE*

## *UNIT COOLERS*



• *FOR REFRIGERATING CABINETS &  
COLD STORAGE ROOMS*

• *FOR HIGH & MEDIUM  
TEMPERATURE APPLICATIONS*

• *CAPACITY RANGE  
FROM 470W TO 5000W*

For refrigerating cabinets, and small cold rooms, in high and low temperature applications.

Casing and fan cover from recyclable ABS, without sharp or cutting edges.

## DFE

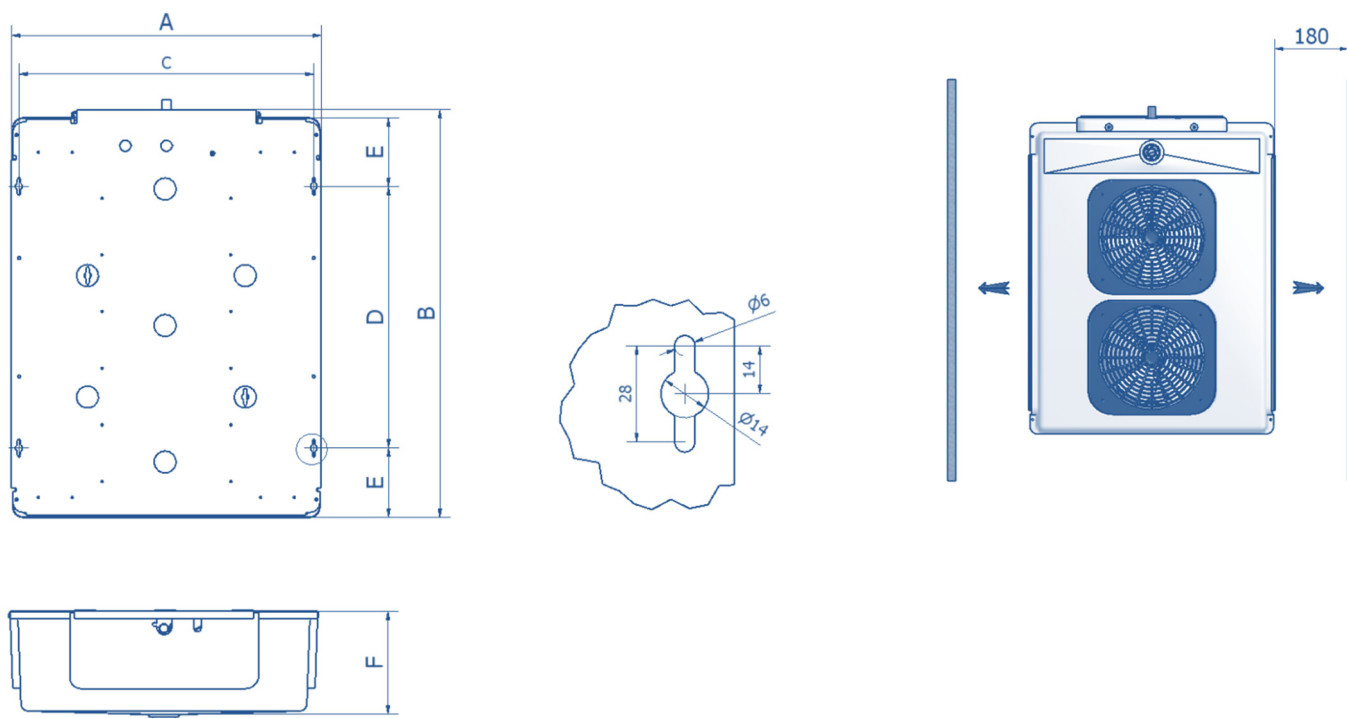
Fast installation without removing the plastic cover. Easy removable casing with 4 screws M4, for maintenance.

Finned coils from corrugated aluminum fins with 4mm spacing and copper tubes 3/8". On demand coils with anticorrosion treatment, certified for use in a food area.

Models		DFE 02	DFE 03	DFE 04	DFE 05	DFE 06	DFE 07	DFE 08
Nominal Capacity R404A (Watt)	SC1 $\Delta t=10K$	1040	1220	1310	2680	2950	4220	5050
	SC2 $\Delta t=8K$	655	820	890	1800	2000	2840	3400
Fan		230V/50 Hz	230V/50 Hz	230V/50 Hz	230V/50 Hz	230V/50 Hz	230V/50 Hz	230V/50 Hz
		1300 rpm	1300 rpm	1300 rpm	1300 rpm	1300 rpm	1300 rpm	1300 rpm
		1 x 250	1 x 250	1 x 250	2 x 250	2 x 250	3 x 250	3 x 250
Power Input	Watt	60	60	60	120	120	180	180
Air flow	m <sup>3</sup> /h	485	485	450	1060	975	1925	1655
Air throw	m	2 x 3	2 x 3	2 x 2,8	2 x 4,3	2 x 4	2 x 6,4	2 x 5,5
Defrost 230V	Watt	∅	∅	∅	∅	∅	∅	∅
Exchange surface	m <sup>2</sup>	3,5	3,6	4,5	8,2	10,3	12,3	18,6
Internal volume	dm <sup>3</sup>	0,51	0,85	1,02	1,8	2,44	2,7	4,4
Connections	Inlet	1/2" SAE	1/2" SAE	1/2" SAE	1/2" SAE	1/2" SAE	1/2" SAE	1/2" SAE
	Outlet	1/2" O.D.	1/2" O.D.	1/2" O.D.	18mm O.D.	18mm O.D.	18mm O.D.	18mm O.D.

Models		DFE 02 R	DFE 03 R	DFE 04 R	DFE 05 R	DFE 06 R	DFE 07 R	DFE 08 R
Nominal Capacity R404A (Watt)	SC3 $\Delta t=7K$	465	620	680	1380	1550	2150	2630
	SC4 $\Delta t=6K$	345	485	535	1080	1225	1715	2100
Fan		230V/50 Hz	230V/50 Hz	230V/50 Hz	230V/50 Hz	230V/50 Hz	230V/50 Hz	230V/50 Hz
		1300 rpm	1300 rpm	1300 rpm	1300 rpm	1300 rpm	1300 rpm	1300 rpm
		1 x 250	1 x 250	1 x 250	2 x 250	2 x 250	3 x 250	3 x 250
Power Input	Watt	60	60	60	120	120	180	180
Air flow	m <sup>3</sup> /h	500	500	460	1090	1000	1980	1700
Air throw	m	2 x 3,1	2 x 3,1	2 x 2,8	2 x 4,5	2 x 4,1	2 x 6,6	2 x 5,7
Defrost 230V	Watt	500	500	500	1000	1000	1600	1600
Exchange surface	m <sup>2</sup>	3,5	3,6	4,5	8,2	10,3	12,3	18,6
Internal volume	dm <sup>3</sup>	0,51	0,85	1,02	1,8	2,44	2,7	4,4
Connections	Inlet	1/2" SAE	1/2" SAE	1/2" SAE	1/2" SAE	1/2" SAE	1/2" SAE	1/2" SAE
	Outlet	1/2" O.D.	1/2" O.D.	1/2" O.D.	18mm O.D.	18mm O.D.	18mm O.D.	18mm O.D.

			DFE 02	DFE 03	DFE 04	DFE 05	DFE 06	DFE 07	DFE 08
Dimensions	A	mm	560	560	560	605	605	605	605
	B	mm	440	440	440	792	792	1140	1140
	C	mm	538	538	538	576	576	576	576
	D	mm	264	264	264	508	508	859	859
	E	mm	88	88	88	133	133	151	151
	F	mm	152	152	152	200	200	210	210



### Standard Conditions

Standard Conditions	Air Inlet Temperature C°	Evaporating Temperature C°	RH %
SC1	10	0	85
SC2	0	-8	85
SC3	-18	-25	95
SC4	-25	-31	95

### Refrigerant Correction Factor

Refrigerant	R404A	R134a	R507A	R407A	R407C	R407F
SC1	1	0,93	0,97	1,19	1,21	1,19
SC2	1	0,91	0,97	1,24	1,26	1,24
SC3	1	0,85	0,97	1,28	1,31	1,29
SC4	1	-	0,97	1,32	1,36	1,35

**Elvicon**

4 Lefktron St. 12133 Peristeri Athens – Greece Tel : +30 2105715572 Fax: +30 2105751650  
e-mail : elvicon@elvicon.gr www.elvicon.gr

