

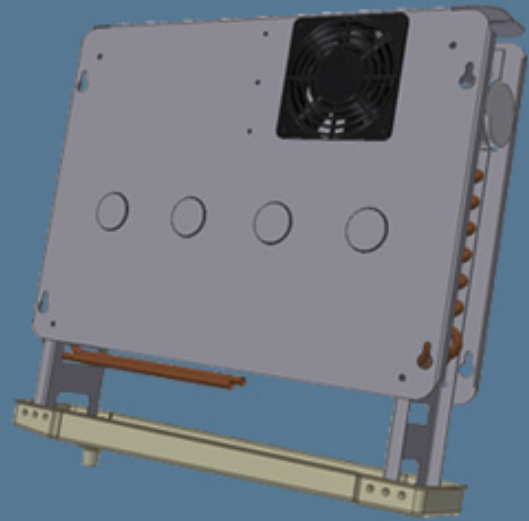
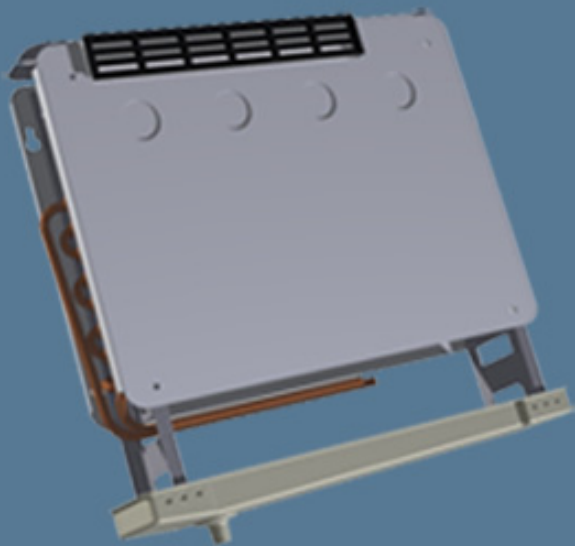


**ELVICON**  
AIR-COOLED HEAT EXCHANGERS

EXPERIENCE, QUALITY, KNOW-HOW  
EXPERIENCE, QUALITY, KNOW-HOW

# *EBF*

## *UNIT COOLERS*



• *FOR REFRIGERATED COUNTERS*

• *FOR HIGH  
TEMPERATURE APPLICATIONS*

• *CAPACITY RANGE  
FROM 380W TO 800W*

Designed for Refrigerated Counters.  
For high temperature applications.

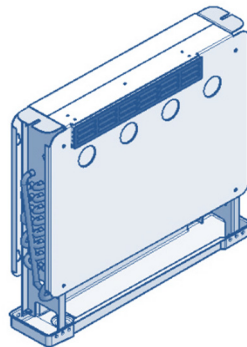
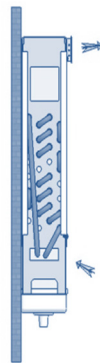
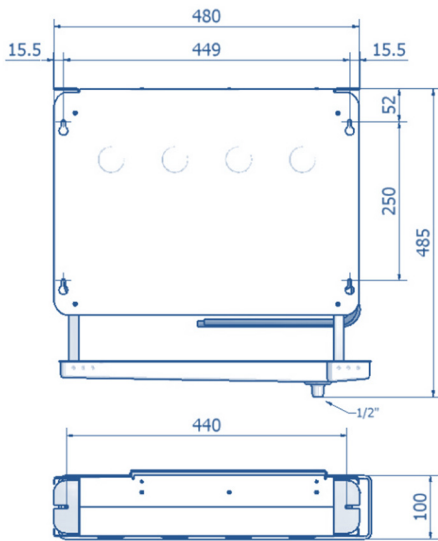
White aluminium casing.  
Fan cover and drain pan from ABS

## EBF

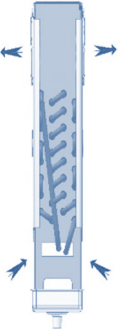
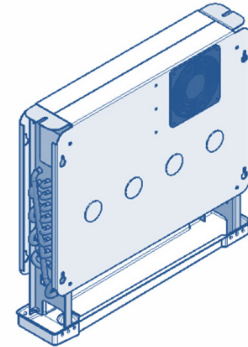
Easy removable front casing, for easy cleaning and maintenance. Very fast installation.

Finned coils from corrugated aluminum fins with 4mm spacing and cooper tubes 3/8", with anti-corrosion treatment certified for use in a food area.

Models		EBF 01	EBF 02	EBF 11	EBF 12
Nominal Capacity R404A (Watt)	SC1 $\Delta t=10K$	770	830	605	655
	SC2 $\Delta t=8K$	490	540	390	430
Fan		230V/1/50Hz	230V/1/50Hz	230V/1/50Hz	230V/1/50Hz
		2400 rpm	2400 rpm	2700 rpm	2700 rpm
		1 x $\varnothing$ 60mm	1 x $\varnothing$ 60mm	2 x $\varnothing$ 120mm	2 x $\varnothing$ 120mm
Power consumption	W	48	48	36	36
	A	0,37	0,37	0,26	0,26
Air flow	m <sup>3</sup> /h	250	250	185	185
Air throw	m	5,7	5,7	2 x 2,2	2 x 2,2
Exchange surface	m <sup>2</sup>	3,3	3,4	3,3	3,4
Internal volume	dm <sup>3</sup>	0,60	0,80	0,60	0,80
Connections	Inlet	3/8" O.D.	3/8" O.D.	3/8" O.D.	3/8" O.D.
	Outlet	3/8" O.D.	3/8" O.D.	3/8" O.D.	3/8" O.D.



EBF 01 - EBF 02



EBF 11 - EBF 12

### Standard Conditions

Standard Conditions	Air Inlet Temperature C°	Evaporating Temperature C°	RH %
SC1	10	0	85
SC2	0	-8	85

### Refrigerant Correction Factor

Refrigerant	R404A	R134a	R507A	R407A-R407F	R407C
SC1	1	0,93	0,97	1,19	1,21
SC2	1	0,91	0,97	1,24	1,26

## Elvicon

4 Lefktron Str. 12133 Peristeri, Athens - Greece Tel : +30 2105715572 - 2105763587 Fax: +30 2105751650  
e-mail : [elvicon@elvicon.gr](mailto:elvicon@elvicon.gr) [www.elvicon.gr](http://www.elvicon.gr)

